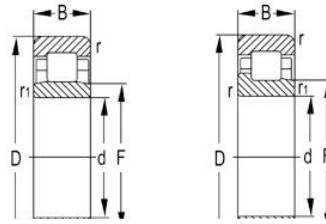
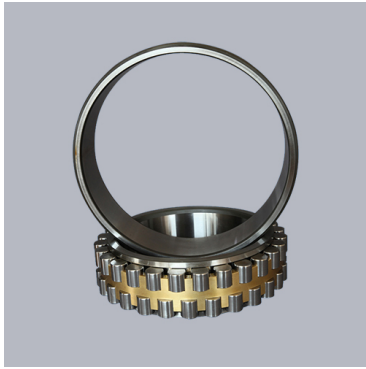


## NU2300 Series



select	Inquiry Designation	Principal Dimensions(mm)						Basic Load Ratings(KN)		Limited Speed(rpm)	Weight
		d	D	B	rs min	rs1min	Dynamic(Cr)	Static(Cor)	Grease	Oil (kg)	
NU2304E	20	52	21	1.1	0.6	42	39	12000	14000	0.242	
NU2305E	25	62	24	1.1	1.1	57	56	9700	11000	0.386	
NU2306E	30	72	27	1.1	1.1	74.5	77.5	8300	9700	0.58	
NU2307E	35	80	31	1.5	1.1	99	109	7200	8500	0.78	
NU2308	40	90	33	1.5	1.5	82.5	88	7000	8200	0.951	
NU2308E	40	90	33	1.5	1.5	114	122	6400	7500	1.06	
NU2309	45	100	36	1.5	1.5	99	104	6300	7400	1.27	
NU2309E	45	100	36	1.5	1.5	137	153	5700	6800	1.41	
NU2310	50	110	40	2	2	121	131	5700	6700	1.7	
NU2310E	50	110	40	2	2	163	187	5200	6100	1.9	
NU2311	55	120	43	2	2	148	162	5200	6100	2.17	
NU2311E	55	120	43	2	2	201	233	4700	5600	2.37	
NU2312	60	130	46	2.1	2.1	169	188	4800	5700	2.71	
NU2312E	60	130	46	2.1	2.1	222	262	4400	5200	2.96	
NU2313	65	140	48	2.1	2.1	188	212	4400	5200	3.27	
NU2313E	65	140	48	2.1	2.1	248	287	4100	4800	3.48	
NU2314	70	150	51	2.1	2.1	223	262	4100	4800	3.98	
NU2314E	70	150	51	2.1	2.1	274	325	3800	4400	4.25	
NU2315	75	160	55	2.1	2.1	258	300	3800	4500	4.87	
NU2315E	75	160	55	2.1	2.1	330	395	3500	4100	5.25	
NU2316	80	170	58	2.1	2.1	274	330	3600	4200	5.79	
NU2316E	80	170	58	2.1	2.1	355	430	3300	3900	6.25	
NU2317	85	180	60	3	3	315	380	3400	4000	6.7	
NU2317E	85	180	60	3	3	395	485	3100	3700	7.16	

## NU2300 Series

NU2318	90	190	64	3	3	325	395	3200	3800	7.95
NU2318E	90	190	64	3	3	435	535	2900	3400	8.56
NU2319	95	200	67	3	3	370	460	3000	3500	9.2
NU2319E	95	200	67	3	3	460	585	2700	3200	9.8
NU2320	100	215	73	3	3	410	505	2900	3400	11.7
NU2320E	100	215	73	3	3	570	715	2600	3100	12.8